



Starlight Express

Starlight Quilters Guild

On the web at www.starlightquilters.com

On Facebook at www.facebook.com/StarlightQuiltersGuild/

== July 2019 ==

Starlight Quilt Guild

Officers and Committees:

President: Janette Sheldon

Vice-President: Jean Turvey

Past President: Margaret Welch

Secretary: Janet Wikle

Treasurer: Sue Howard/ Asst: Chris Haubein

Accuquilt Manager: Cheryl Tomson

Door Prizes: Pam Lanza/Cyndy O'Rourke

Exchanges: Victoria Foley

Fat Quarters: Jan Ketchum

Fundraising/Raffle: Deb McCurnin /Beverly Renner

Guild Challenge: Donna Di Natale

Historian: position open

Hospitality: Opal Yarnell

Humor Presentation: Mary Funk/Shirley Lewis

KCRQF Representative: Kim Cawthon

Librarians: Cheryl Tomson/Christine Foo/Pam Jenkins

Membership: Michele Fix

Newsletter: Judy Danz (starlightnewsletter@gmail.com)

Opportunity Quilt: position open

Opportunity Quilt Tickets: position open

Program Chair: Mary Honas/Jeanette Luehring

Retreats: Donna Holloway

Show and Tell Ribbons: Mary Funk

Website: Pam Avara (pamela@avaraarts.com)

Workshops: Jeanne Fowles-Culley/Donna di Natale

Community Services Projects:

Guild Project: Connie Passaro

Project Linus: Mary Honas/Opal Yarnell

Project Warm Embrace: Donna Di Natale/Renee Arnett

Quilt Show

Shirley Lewis, Connie Passaro, Beverly McCreery,
Karen Edwards and Cheryl Tomson

President's Message

July 2019



Deadlines. Am I the only person running from one deadline to another? In June it was the Festival. Help Kim get all those volunteers lined up - get all those quilts checked in and then disbursed back out. Whether it's for some sort of event, or just for ourselves. there's always a deadline.

Did you get the quilt finished you wanted to take for show and tell? Did you make a quilt for Project Linus or Project Warm Embrace? And did you make a fidget quilt or work on your Round and Found challenge?

And what about everything else.... Did you get everything planted you wanted in the ground this season? Too late now! But did you go back out and weed or water? And is that kitchen cleaned up so you can slink back into to your workroom?

Just when you think you've done it all, something else always pops up - like the fall quilt show. There's another very large deadline looming out there. Are you busy making things for the boutique? Are you finishing up quilts you want to enter? And are you primed and ready to offer your assistance when the call comes out for volunteers?

You know, it's hot and I'm rather burned out with all these deadlines. Think perhaps the best thing to do is lay low, stay out of the sun, and perhaps take a nap.

See you at guild!

Janette Sheldon



**The next SQG guild meeting is Tues, July 23rd, 7 PM
Overland Park Lutheran Church 7810 W 79th St. Overland Park KS**

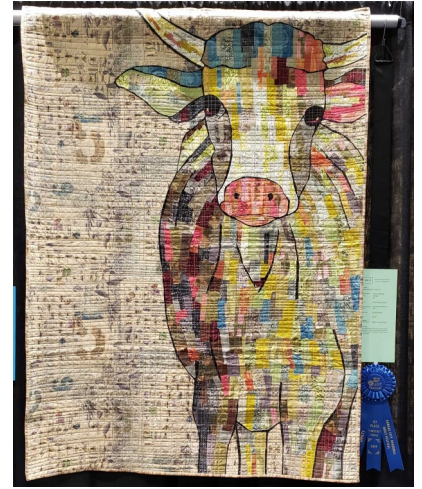


Congratulations to two of our members who won ribbons at the Kansas City Regional Quilt Festival.

Donna Hollaway's "**Good Morning Abilene**" received 1st place in Small, I Did It All.

Lois Bozarth received 2nd place with "**My Never Ending Nightmare**" in Large Machine Quilted.

Way to go!!!



Hospitality Committee

The guild members listed below have a **JULY** birthday. Please bring a sweet or savory dish for the hospitality table to share with all.

- Diane Phillips
- Donna di Natale
- Dana Switzer
- Mary Honas
- Judy Danz
- Lois Bozarth
- Janice McKee
- Joyce Verstraete
- Ann Doherty
- Susan Tuttle

Greeters for July are Linda Clatterbuck and Cheryl Dvorak.



STARLIGHT QUILTERS GUILD			
Treasurer's Report			
June 30, 2019			
	Beginning Checkbook Balance	\$ 12,468.22	
	Petty Cash	60.00	
	Certificate of Deposit	6,096.75	
	Cash Balance		\$ 18,624.97
Income			
	Bucket Brigade	326.00	
	Membership	435.00	
	Opportunity Quilt	564.00	
	Proceeds - Sandy Fey Guild sale	2,777.25	
	Program/Workshop- Edyta Sitar	600.00	
	Transfer-In Cash	50.00	
	Welcome	1.55	
	Total Income		\$ 4,753.80
Expenses			
	Donation- Susan G. Komen	2,777.25	
	Door Prizes	38.57	
	Furniture and Fixtures	127.36	
	Hospitality	78.62	
	Kansas Annual Report	40.00	
	Newsletter	12.75	
	Other Expense- Meeting Set-up	80.00	
	Program	271.60	
	Program/Workshop - Edyta Sitar	357.21	
	Rent	225.00	
	Total Expenses		\$ 4,008.36
	Ending Checkbook Balance	\$ 13,213.66	
	Petty Cash	60.00	
	Certificate of Deposit	6,096.75	
Cash Balance	June 30, 2019		\$ 19,370.41
Submitted by Sue Howard			



Color My World Quilt Show October 4th & 5th

Color My World

Starlight Quilters Guild Show
October 4 & 5, 2019

You can color my world by displaying your beautiful quilts. You can color my world by making baked goods to sell. You can color my world by contributing to the boutique, always a crowd pleaser. You can color my world by volunteering to work at the show, and before the show, and after the show. We have lots of talent in our guild, so let's show it off. Let's make this show a showcase for Starlight!

The Grim Rippers

Color My World Quilt Show Boutique

Hello Quilters! Our annual quilt show and BOUTIQUE will be here before you know it. Last year we asked you to pick up unsold boutique items (due to storage issues, not because we didn't love them!). We would like another chance to sell those items.... so bring them back!

You can also make new items for us! Halloween, Thanksgiving and Christmas will be right around the corner from our event. They will be popular for shoppers looking for home décor or gift items. Thanking you all in advance! Peggy Skaith and Pam Lanza.

July Guild Meeting

We've seen the magic that happens when a quilting design enhances the quilt top. Many decisions go into making that magic happen... from thread choices and quilting pattern to the technical skill of actually quilting a quilt on the frame. Whether it's hand guided or computer aided quilting, knowledge and skill are involved.



Starlight members Karen Huffman and Peggy Skaith will share information about all these aspects of long arm quilting and the best ways to work with your quilter.



Whether you quilt your own quilts or quilt by checkbook, we will come away with deeper knowledge and a greater appreciation for our completed quilts.

FAT QUARTER EXCHANGE

Marsha Reeves, winner of six and a half yards of fabric, chose **Red White and Blue** fat quarters for July. One entry per fat quarter contributed.

Red White and Blue,
Happy firecrackers to you.
Red White and Blue,
Joy of freedom wishes to you.
Red, White and Blue,
Military Heroes, brave, loyal, true.
God Bless America



Let's Sew!!!

Project Linus

August 6, 2019 6pm - 8pm
Harpers Fabric Shop
7918 Santa Fe Dr.
Overland Park, KS 66204
Call 913-648-2739 to register.
.....

Fidget Quilt Charity Sew Day

Saturday, August 17th 9am - 3pm
Antioch Library
8700 Shawnee Mission Pkwy
Merriam, KS 66202
.....

Charity Sew Day at Prairie Point

Saturday, August 31
of Labor Day Weekend
10am - 5pm
Prairie Point Fabric & Quilt Shop
12116 W 95th St.
Lenexa, KS 66215
Call (913) 268-3333 to register
.....

Color My World Starlight Quilters Guild Show

October 4 & 5 10am - 5pm
Abdallah Shrine Temple
5300 Metcalf Avenue
Overland Park KS
.....

Fall 2019 RETREAT

Unity Village, Lee's Summit, MO
November 1, 2, 3
Contact Donna Holloway
.....

Spring 2020 RETREAT

Cedar Crest Lodge - Pleasanton, KS
April 3, 4, 5
Contact Donna Holloway

JULY BASKETS

It may be July and I know our Starlight Members are patriotic, but I also know quilters never spend all their hard earned cash on fireworks! No way will they blow it up and that is a very good thing this month. The Bucket Babes are hard at work getting together buckets that will blow your mind and not your budget! Four little quarters will buy you one chance and five big "ones" will make you see stars (and stripes). You can have six or more lucky chances at buckets that sparkle and shine. There will be kits and gadgets, fat quarters and (rumor has it) even some more of those luscious flannels that everyone wants.

Last month we lit up the sky with our record breaking fund raising and we owe it to all of the Starlight Quilters in their incredible generosity in donations and ticket purchases. Oh say can we see.....so much fun at our next meeting.

Come back and see the babes, check out our buckets and just say hi. We love to hear the latest about family, friends and projects. We may be red and white but never blue when we have fun at the Starlight Quilt Guild! See you soon and thank you all so much for making this happen.

The Bucket Babes



Just a couple of the buckets from last month!

Exchange Project



If you are participating in the project exchange please remember to bring your row or block for the next hand off at the July meeting. Please be ready to pass it on to the next person in your group. Additional information is available on the Starlight website under "Exchange Project ". Contact Victoria Foley with questions.

LIBRARY CORNER

Once you have your top pieced it's time to think about how it will be quilted. The library has a number of books on this subject, whether the quilting will be done by long-arm, domestic machine, or hand. Look them over for new ideas.

More new books have been added thanks to donations. They include: "Quilt a Travel Souvenir", "Jelly Roll Quilt Magic", "More Jelly Roll Quilts", "Magic Stack-n-Whack Quilts", "Stars A La Carte", "Square Dance", "Stack the Deck", "My Stars VII" from Kansas City Star, and "Stars!" from the American Quilt Study Group. There's sure to be something to inspire you.



Your librarians, Cheryl Tomson, Pam Jenkins, & Christine Foo

AccuQuilt Go! Update



By request, several new dies have been added to our AccuQuilt Go! selection. They are the **2½ inch Strip Die** which can accurately cut 3 strips at a time, **Apple Core, 4" finished Drunkard's Path, Lamb & Baby Rattle**, and a cute **Owl** which can be used to also create a number of other adorable animals. A list of all the dies is included on the Starlight web site. Whether you want to create your own Jelly Rolls to use up leftover fabric, avoid the hassle of cutting curves for an apple core or drunkard's path quilt, or easily cut shapes for a child's quilt, the guild's AccuQuilt is available to any member. It is set up in the library area prior to each meeting and at scheduled sew days. Contact me to set up a convenient time for individual or a small group use.

Cheryl Tomson

Starlight Quilters Guild Fall Retreat

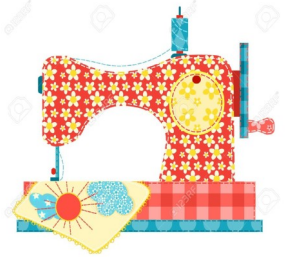
There was a brisk sign up for our Fall Retreat last month, but still plenty of spots left!! Our retreat will be 3 days of non-stop sewing and fellowship, with someone else cooking your meals! We will be at Unity Village again in Lee's Summit, MO on November 1, 2, and 3, 2019.

The work space is quite large and there are ample bedrooms, so we can accommodate a lot of quilters with space to spare! Cost will remain the same as last year: \$235 (double) or \$355 (single); and includes your own 4' of table space, 2 nights sleeping accommodations, and meals consisting of Friday dinner; Continental Breakfast/Lunch/Dinner on Saturday, and Continental Breakfast/light Lunch on Sunday.

Due to some changes in how Unity books the event space and prices their catering you will notice a few adjustments to the meal plan. We will utilize the breakfast buffet offered by the hotel on both mornings; Unity will cater the Saturday lunch and dinner. It will provide our Friday evening dinner and Sunday light luncheon... and yes, that means we will not need to walk over to their dining hall on Friday!!

The emphasis of our retreat is primarily on being together and being inspired by everyone's projects; and I will, again, be raffling off a big board ironing surface! Sign ups for the retreat will close after our September Guild Meeting. Final payment will be due by October 10th.

Any questions, please contact Donna Holloway (913 433 6752); or DONNALHOLLOWAY@YAHOO.COM



Fidget Project Update

As of this writing, July 7th, there have been 21 Fidget Quilts turned in this project. This is a good start, especially considering they won't be donated to Garden Terrace until the end of November! If there were 10 turned in at the end of this month and each month through November, we would have a total of 71!

That number would give that many Alzheimer's patients something to comfort them and perhaps distract them at times from the anxiety that can go along with this disease.

Online??? Check out Starlight's website for tips. Visit Pinterest or YouTube for more ideas to get started on making one of these special little quilts. No access? See me at guild or contact me at 913-710-4265.

Mark your calendar for a Sew Day on Saturday, August 17th from 9:00-3:00 at the Antioch Library. You can work on a Fidget Quilt, Warm Embrace Quilt, Linus Quilt, boutique items or anything else. I will bring an assortment of the trinkets, buttons, doo-dad's, fabric and notions donated by many generous guild Members for you to use on the Fidget Quilts. Also, the guild's AccuQuilt Go! cutter will be available for your use.

Questions? Email cpfromkc@gmail.com or phone 913-710-4265. Connie Passaro



2019 Guild Challenge ROUND AND FOUND

This year's challenge is quite simple:

ROUND

the outer edge must be curved and

FOUND

something you have found that deserves a special place in this quilt.

Minimum diameter is 12"

Maximum diameter is 24"

What is inside the circle is up to you!
Start imagining!

Project ♥ Linus



Project Linus Sew Day
August 6, 2019 6pm to 8pm
Harpers Fabric Shop
7918 Santa Fe Dr.
Overland Park, KS 66204
Call 913-648-2739 to register

For Project Linus, the best blanket size at which most children would be served measures between 40" by 40" and 40" by 50. Most of the kits offered at both Starlight and Harper's address this need. The size is approximate, and variation is allowed.

Remember, we provide love, a sense of security, warmth, and comfort to children who are seriously ill, traumatized, or otherwise in need through the gifts of new, handmade blankets. Our blankets from Starlight Guild and Harper's work night are checked, repaired, labeled, then bagged each month. The blankets are taken by another Project Linus volunteer to Children's Mercy Hospital South, St Joseph Medical Center, Johnson County Department of Children and Family, and University of Kansas Hospital. Recently, the Kansas City police department requested blankets. These are great charities and we always need more!!!

Since between 80 and 200 Project Linus blankets go through Starlight and Harper's every few months, there are a few recurring issues that we need help to address. If you make quilts for Project Linus, **PLEASE READ!**

- When quilting a blanket, quilting should be between 6 and 8 inches apart both horizontally and vertically. This includes blankets made with Minkee or fleece.
- **ALWAYS check for pins!** My collection is growing....
- If you have animals, PLEASE use a masking tape roller to clean the blanket. Even if animals are not allowed in the sewing room, fur clings to everything!!!

==== Project Linus Guidelines =====

- The minimum size is 36" x 36" for the Kansas City area. The preferred size that will serve most children is 40" x 60" or crib-sized.
- The best blanket making fabrics are cotton quilting fabrics, flannel and fleece.
- Use only one layer of fleece. Two layers are too warm for our area.
- Leave off ribbons, buttons or anything that could be considered a choking hazard. Anything that can be pulled off by a little one should not be applied to a Project Linus blanket!
- No holiday quilts, please.
- To pillowcase a quilt: lay batting down. Lay backing fabric, right side up, on top of batting. Lay quilt top, right side down, on top of backing fabric. Using a 1/2" seam, sew all around the edges, leaving a 6"-8" opening to turn the quilt. Make sure batting in on the inside. Trim corners diagonally, just short of the stitch line. Turn quilt. Press, stitch opening shut. Stitch 1/2" around the edge of the quilt.
- Big Block patterns are available on the Project Linus table.
- **Please bring us Best Choice labels, Price Chopper store brand.** These labels help to supply the Project Linus labels for blankets.
- For additional patterns, see these web sites:
Project Linus: Kansas City Chapter: <http://www.projectlinuskc.org/>
Project Linus National Organization: <http://projectlinus.org/>



Above quilts are Riding the Rails & Big Blocks.

Co-chairs: Opal Yarnell, Mary Honas

Project Warm Embrace



Project Warm Embrace is a Kansas initiative to make quilts (45x60 or larger for youth and teens) and Dream Bags for children in foster care living in Kansas.

Co-Chairs, Renee Arnett & Donna di Natale

http://starlightquilters.com/project_warm_embrace

Donna di Natale, member of the Starlight Quilters Guild, is to be credited for creating a pattern in 2018 for the Project Warm Embrace Dream Bag. Here is how the Dream Bags got their name:

When children come into the care of the DCF, it is a time of insecurity and instability. Many times a child is given only 15 minutes to gather up their belongings when being removed from their home. They often leave with their possessions in a trash bag! Since children arrive with very few possessions, providing a fabric bag during this traumatic time in their life sends an encouraging message letting each child know they are special and that someone cares about them. The Starlight Quilters Guild has named these fabric bags "Dream Bags" after SQG member Susan Wagner shared the following quote by William Butler Yeats: "Take, if you must, this little bag of dreams. Unloose the cord, and they will wrap you round."

A PDF pattern for the Dream Bag is available via the link to the Project Warm Embrace page on the Starlight Quilters Guild website: http://www.starlightquilters.com/project_warm_embrace

You are invited to make a Dream Bag for Project Warm Embrace. Use your stash fabric or visit a quilt shop to purchase fabric that is teenage or youth friendly. Prairie Point Quilt & Fabric Shop even sells kits for Dream Bags! All you need is 27" for the body, 9" for the cuff, and 2-1/2" for the casing!

Samples of Dream Bags will be on display at the July SQG Meeting. Toggle locks and cording are still available in a limited supply. Bring a Dream Bag or two to the July SQG Meeting and receive a toggle lock and cording to add the final touch!

Since February, Starlight has delivered 55 Dream Bags to the Overland Park Office of the Kansas Department of Children & Families (DCF)! Thank you to all who have already contributed!

PROJECT WARM EMBRACE SEW DAY IS NOW...

Charity Sew Day at Prairie Point Quilt & Fabric Shop

Saturday August 31st (of Labor Day weekend) 10am - 4pm

This sew day is open to ANY quilter/sewer who'd like to work on ANY charity project of their choice. Invite a friend to join you!

Bring your sewing machine and supplies needed to work on a charity project of your choice. Enjoy the camaraderie with others who are passionate about community service too!

Call Prairie Point at 913-269-3334 to reserve your spot!

NEW location: Prairie Point Quilt & Fabric Shop
12116 W 95th Street, Lenexa Kansas

Need the pattern for the Dream Bag?

You can find a PDF pattern on the guild's website:

www.starlightquilters.com/project_warm_embrace

Questions? Email Renee at rarnett03@gmail.com or
Donna at diNatale@att.net.



Starlight Quilters Guild
P.O. Box 14533,
Lenexa, KS 66285.
www.starlightquilters.com

Advertisements

➡ **Handi Quilter Avante For Sale** - To make room for a larger machine I am selling my Avante longarm with Pro-Stitcher computer system on a 12 ft frame. Lots of extras! Serviced annually, \$10,500 firm. Contact **Vicki Kerkvliet** at 913-205-7538.

➡ **Machine Quilting** - Edge-to-Edge computerized longarm machine quilting by Elizabeth Brown. Phone: 913-626-7135. Website: Duelingthread.com. Email: Duelingthreads@gmail.com.

Machine Quilting - Machine Quilting by Karen - Let me help you finish all those tops! Low pricing, full Long Arm services – all over designs or custom quilting 913-638-4625 **Karen Huffman** or email at karen7315@gmail.com

Machine Quilting - Machine Quilting, all styles of quilting from simple hand-guided designs to custom creations. Guild members, I will piece your backing at no extra charge! EspeciallyQuilts@att.net, or call 913-341-0525 **Peggy Skaith**

Amy Senatore's quilt shop, **City's Edge**, classes and more. <http://www.citysedgestudio.com>
616 W. Main Street Warsaw, MO 65355 Mon-Fri: 10a-5p; Sat: 9 am-3 pm

Donna's Singer Service - Does your Featherweight need a good cleaning and oiling? Or is it not sewing like it should? Let me clean and service your machine for you. I service Singer models 15, 99, 221, 222, and 301. Reasonable fees and timely service. **Donna di Natale**, dinatale@att.net

Custom Machine Embroidery - quilt labels, towels, gifts, T-shirts, logos etc. Fast turnaround time on orders. **Judy Brennan** 913-451-8997 or by email at jbrennan2@kc.rr.com

C & S Creations - Custom wood working projects. Let us help with your sewing/hobby room needs. Custom workstations, Featherweight cabinets, ruler holders, scissor racks. **Cheryl & Scott Diebold** 913-677-0838