



Starlight Express

Starlight Quilters Guild

www.starlightquilters.com

August 2010

Presidents Message

By Connie Flagler

Greetings Quilters,
First of all I want to thank Donna and Lorna for all their hard work on programs this year. Our last meeting was a HUGE success! Last count we had 100 guests attending and around 100 members with 12 new members. We couldn't have done it without such strong Programs and Workshop Chairs. We have had an incredible team this year in all categories. I thank you all for giving of your time and effort to keep building our guild each year. One of our members who had brought a guest that joined last month told us that the new member wanted us to know how friendly and welcoming our guild is. That is a huge compliment to all of you.

We are still selling tickets for the Opportunity Quilts and Treasure Chest. Please think about getting those tickets at the August meeting. These are the fundraisers that help us pay for our programs each year, such as Jo Morton etc. Also, don't forget to check out the workshops that are upcoming and sign up as soon as you can so we can get an accurate count.

I want to get ahead of myself about the October and November guild meetings. We are going to have a food drive again this year. Every time I listen to the news I hear about how bad the food pantries are hurting in all cities. Let's clean out ours at home and bring some much needed items to give to those in need. If anyone would like to donate baby foods and cereals, they are the one food item that usually doesn't get donated or no one thinks of them when putting food together. That would be a big blessing to those mom's and dad's without jobs that have families. Just something to think about as we all prepare for those large holiday gatherings. I often wonder how many people don't have food for the table for the family holiday dinners.

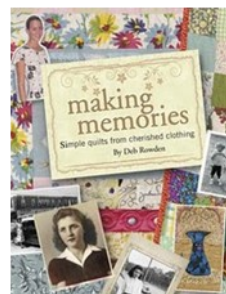
WELCOME, WELCOME TO ALL THE NEW MEMBERS THAT HAVE JOINED THIS YEAR! We are so happy to have you in our guild. If you have any questions or concerns, please contact me and I'll try to answer your questions or find someone to put you in touch with. Also, if you have any desire to serve on the board or a committee please let me know. We are putting together our team for next year and new faces and new ideas are always welcome.

See you in August.



August Program- Making Memories by Deb Rowden

Preserve your treasured memories by stitching them into keepsake quilts! Often our most special memories are attached to clothing or other fabrics from our past. Join Deb Rowden as she shows us how to create one-of-a-kind quilts from these cherished textiles and bring your memories out of storage and back to life. Learn how Deb made a unique mother-daughter quilt for her friend, Paula Ellis, using Paula's mother's 1940s fashions and her own childhood clothing. This quilt is now a treasured possession of Paula's showcasing the fabrics that represent a lifetime of memories. Deb will also explore other memory quilts—from antique to contemporary. If you have some favorite textiles that you would like to use to make a memory quilt, bring them along and Deb will discuss how you might use them



Quilted Postcard Workshop— September 28, 2010

Deb Rowden will present a workshop on making quilted postcards during our Quilting Bee meeting. Plan to participate in making these lovely quilted postcards.



Jo Morton at July's SQG Meeting

After months of anticipation, Jo Morton, like Christmas finally arrived. To assure sufficient room for the size of the gathering expected, the sanctuary of Country-side Christian Church was reserved. And it was needed. In addition to our many guild members, there were one hundred visitors.



Jo Morton started quilting in 1979. By 1982 she was teaching and by 1985, she was creating patterns. Since 2002 she has been designing fabrics for Andover. She came to speak to Starlight Quilt Guild armed with a collection of her small quilts and an excellent presentation.

Many of the speakers who have presented to Starlight Quilt Guild have had a series of rules that guide their work. Jo Morton has only one: Rule #1 – keep your rotary cutter closed when not using it. Other than that, anything goes: she believes there is room for everyone and every style in quilting. With that being said, she believes it is good to experience the old fashion techniques.

Her work reflects her love of antique quilts, Jo Morton likes small quilts that can be used to soften and add texture to a home. She feels it's important to add quiriness to your quilts. Quilts don't need to be symmetrical, patterns don't need to go in the same direction, and you don't need to wait for the perfect fabric to come along. She said that if you want to make scrappy quilts, master small quilts first. If you can make a small scrappy quilt that looks good, your large scrappy quilts will look good too.

Over the years, I have heard many speakers discuss the pros and cons of pre-washing fabric. Jo said she always pre-washes, and her explanation was the best reason in favor of doing so that I've heard. She says if you don't pre-wash, you can't steam press your fabrics because the steam will shrink it. She also says you should never finger press your seams. Jo pays a great deal of attention to seams. Her patterns are very specific on what direction seams should be pressed and the reverse sides of blocks are often shown in her books.

When asked about fabric for the back of your quilts, Jo Morton said that what goes on the back should go with the front of your quilt, because once the pieces have been quilted, the fabrics are married for life. The fabric choice should be dictated by whether or not you want to hide or emphasize the quilting. She said that she uses 100% cotton fabric, batting, and thread, but that you as a quilter should use what you like. Don't be influenced into doing something else. The main thing is to enjoy what you do and avoid being frustrated.

Joe Morton One Liners

Using a fabric justifies having purchased it regardless of how much you bought or how much you used.

Fabric shopping has a social aspect to it, but remember; time at the quilt shop is also lost sewing time.

You don't ever need a particular fabric: you need to learn to pay with what you have.

When she decided that close was OK, she really started to enjoy quilting. And she still makes really nice quilts

Think outside the block: you don't have to make bed-size quilts

Putting blocks on point makes the quilt get bigger faster
Love the little quilts

Library News-

By Sandy Fey & Cheryl Tomson

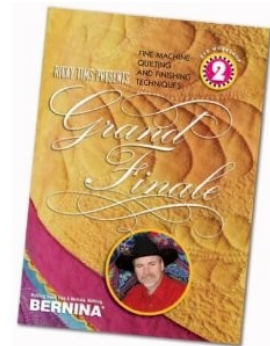
Have you had a chance to check out any of the Library's DVDs yet? We have two created by Ricky Tims and I thought I'd give you a taste of what's inside. The first is entitled "Quilting Caveman

Style" and in it Ricky shows you how to piece a flower and quilt it without measuring or using other conventions like a ¼ inch seam! He utilizes free-flowing curves to create a small wall quilt with a border and faux binding. It was interesting to note that he created and performed all the music that accompanied this video.



The second video, Grand Finale, takes the quilt from the time that you have finished piecing to the finished product. He shows how he creates his own quilting

patterns and then transfers them to the fabric. He demonstrates how he manipulates a full sized quilt using a short arm machine. He uses a lot of bobbin stitching with heavy or metallic threads to add texture to his art quilts. The use of trapunto is also demonstrated. Ricky Tims also suggested a few exercises that one could practice before attempting machine quilting. He ended with a demonstration of two binding techniques. We hope to see you checking out both our videos and books. If you run across a new one that we should order next year, just drop us a note with the author and title.



Tip-

Spray limp pieces of fabric with starch or spray sizing before rotary cutting. Starching the wrong side of flannel or homespun fabrics before you cut helps firm up the weave and thus reduces fraying when you sew.

Starlight Quilter's Guild Annual Quilt Show

47 days.....47 days.....47 days

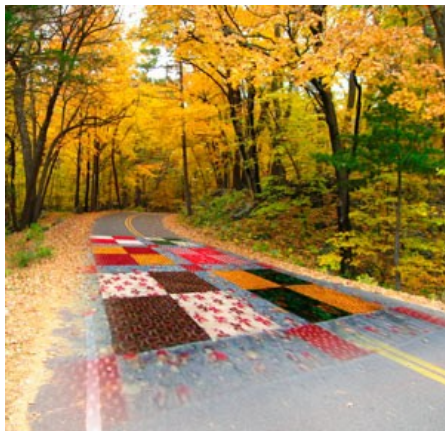
October 9 and 10th 9:00 am to 4:00 PM

Bishop Miege High School
50th Street and Mission Road
Fairway, Kansas

It is getting so close to time, only 47 days from August guild meetingare your "Ribbon Winning" quilts ready? Have you decided which of your antique quilts you will share? Do you have your recipes found for the Bake Sale items? Can you find time to make one more item for the Boutique Sale? Is there one more small quilt you will make for the sale or auction? Do you have some photos of event's past of Guild activities that you can share? Will you be able to donate time at the show? So many questions.....So many opportunities to be part of the most fun weekend all about Quilts!!

Please read.....we are changing this year. We will not gather the quilts at the September meeting as we have in the years gone by. The new plan is to bring your entry form/forms completed (copy one to put with your quilt when you deliver your actual quilt) to the **September** meeting. Deliver your quilts to Bishop Miege School on Friday, October 8th at 4:00 PM. with a copy of the entry form attached. Plan to pick up your quilts at 4:00 PM on Sunday, October 10 at Bishop Miege high school. In the event, it is impossible for you to meet these times, please ask a fellow guild member, friend or family member to deliver or pick-up. It is imperative we have them to hang for display within our timeframe we have access to the space. We have purchased additional racks for display and will not be folding any quilts that are on display.

Look for the Quilt Show table at the back of the monthly meeting to pick up your quilt entry forms, flyers to post at work or other bulletin boards you know of, small handouts for you purse or calendars and to have any questions answered by committee members. If you are a Chair of a committee and will be having a display at the show please let us know. Contact Jan Ketchum 913-901-9906.



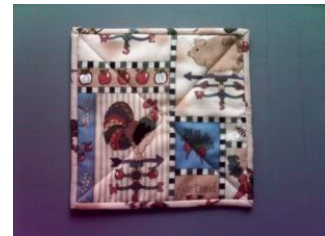
Boutique 2010-

By Alex Thompson

Remember the great speakers you have heard this year? Gone to any of our classes? Well, our low-low dues do not cover the costs of these fabulous benefits. Fund-raisers like the boutique and small quilt sale at our annual quilt show in October help to cover them. But, in order to have a great sale, we need stuff to sell. So, let's get our great handmade goodies together. I accept them at every guild meeting. Got potholders, neck scarves, holiday decorations, table runners, wall hangings, pin cushions, coasters, book covers, credit card holders, hats, tissue box covers, glasses cases, jewelry, computer cases, knitting needle or crochet hook cases, throw pillows, mantle drapes, casserole covers, spiral covers, anything you think would make a great, small gift or whatever pops into your head. It doesn't have to appeal to quilters only. Bring 'em in. I know you guys are creative; so, let's see the stuff!



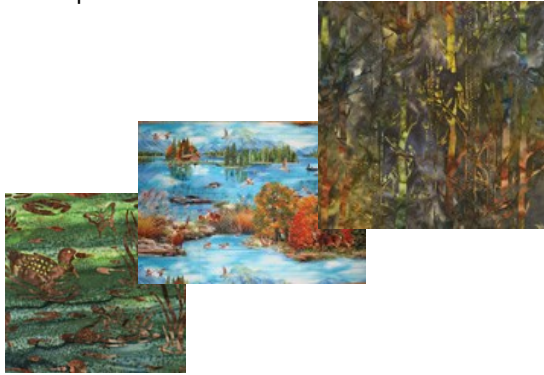
Thanks!!!



Charm Square Project-

By Kristi Orr

Remember to sign up for the September Charm Square exchange. The fabric for September is "Fall Fabric". You will be informed at the end of the August meeting how many 5 inch squares you will need to cut and the approximate yardage you will need to purchase .



2010 Starlight Guild Challenge

—Mary Funk

A Reminder.:

Placemats for the 2010 Challenge will be collected at the August Guild meeting. These placemats will be donated to Meals-On-Wheels. Below are the instructions for your placemats.

Challenge:

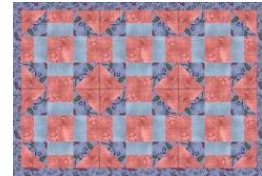
Make colorful reversible placemats of cotton quilt fabrics. Batting: either light loft polyester or two layers cotton flannel (washed)

Finished size: 12 to 14 inches by 16 to 18 inches

Members will vote for prize winners.

Categories:

- Workmanship—hand or machine
- Most fabrics used
- Most placemats turned in



Fat Quarter Drawing-

The response to July's Fat Quarter theme was overwhelming. In addition to the fat quarters brought in by members, the winner also received a set of 6 Fat Eight's picked up at the Wichita Quilt Show in June. Themes remaining for this year are:

Aug: Geometric Art

Sept: Back to School

Oct: I am Woman

Nov: Caffeine Jitters



Do you have a Birthday This Month

Well, Happy Birthday! Please bring a snack or dessert for the Hospitality Table to share. Fellow SQG members will be deliriously happy to share your goodies! No doubt someone will beg for your recipe. This month's birthdays are:

Jan Davidson

Jan Fortney

Kathy Hayes

Sarah Kohake

Deb McCurnn

Susan Mercer

Niki Page

Sandy Ralston

Parthena Wallen

Jeanee Zyck



Project Linus-

Hugs Karen and Mary

Reminder-Have you turned in your three Linus blankets for 2010? Our hope is to have each member make at least three blankets to help us reach our goal. After those three have been turned in you will get a ticket put in a drawing for each additional blanket and at the Nov. 2010 meeting we will draw one ticket for a membership to Starlight for 2011. Thank you all in advance for your contributions to this wonderful organization.



Guild Retreat- Sept 17-19, 2010

By Carol Cleary

If you have signed up for the Starlight Quilt Guild at "The Barn" then congratulations. We are a little over a month away from the retreat. Have you decided on your project or projects to take with you? What snack are you going to WOW your sewing buddies with?



For your money you get Friday and Saturday night lodging, Friday evening dinner, Saturday morning breakfast and dinner and Sunday morning breakfast. Saturday lunch is on your own. There are quilt shops in Winchester, Holton and Topeka KS that are a short drive from The Barn. We have the facility until noon checkout time on Sunday.

Starlight Quilt Guild fund raising projects for 2010

Remember these are major fund raising projects for the guild and helps support the guild in bringing in the wonderful teachers that we have at our monthly meetings.

Opportunity Quilts-

Opportunity Quilt tickets are available at each meeting. Ruth Bonin has tickets for you to purchase for yourself or take several to work with you and sell them to you co-workers. Tickets are \$1.00 each or 6 tickets for \$5.00.



Quilt display case-

By Lisa Souza and Cheryl Diebold



Remember to buy your opportunity tickets to win this lovely quilt display chest (the quilts in the chest will not be part of the drawing-Display only). The chest itself is beautiful and it will be filled full of lots of fun quilting items. See Lisa or Cheryl at the guild meetings. Drawing for the chest will take place at the August meeting. Tickets are \$1.00 each or 6 tickets (opportunity to win) for \$5.00.

Tip-

At the home improvement store, buy a door security lens to use as a "reducing lens". Pin patchwork to your design wall, step back, and view through the lens. The lens distances you from your work, giving you a better idea of contrast and composition.



School House Workshop

Saturday, August 28
9:00 a.m. -12:00 noon
Community of Christ Church
Workshop Fee: \$20 (non-refundable)

August is time for back to school and that's where we are going for our School House Workshop. Whether you are learning new skills or just taking a refresher, this workshop is for everyone. The sessions are all designed for quilting at home on your regular sewing machine. There will be four "classrooms" positioned around the room: making your quilt sandwich; quilting with a walking foot; free motion quilting (without a walking foot); quick and easy binding. The sessions will run concurrently. They will last about 30 minutes each and will be repeated four times with a mid morning break. You may attend each session, or just those you are most interested in. A question and answer period with all the teachers will close the school house workshop. The afternoon (1:00-4:00 p.m.) will be an open sew for anyone wanting time to sew together. You do not need to attend the workshop in order to take advantage of the open sew. Sign up for the School House Workshop will be available at the July and August guild meeting. You must pay for the workshop when you sign up.

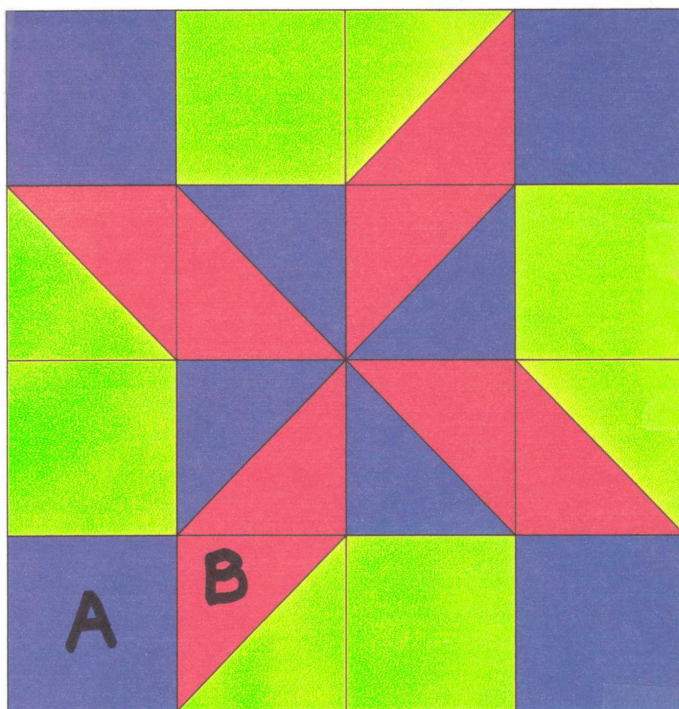


**August Block of the Month
Clay's Choice (12" finished size)**

In light of the primary election this month I have chosen a political block for the August Block of the Month -- Clay's choice, named for Henry Clay.

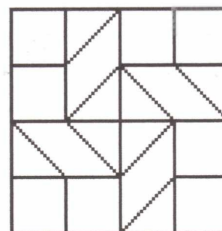
Henry Clay (1777-1852), was a perpetual presidential candidate. A long time statesman, Clay had served in the Kentucky state legislature, and then in the United States Congress before running for president as a National Republican in 1824. Clay never succeeded in his presidential bids but is remembered for his skill as a mediator, a trait that earned him the title "The Great Compromiser."

The example here uses bright modern colors, but you could use reproduction fabrics and colors from the 19th century for an authentic look. I like the block because of the many possibilities for creating a new block simply by changing the order of the fabrics. Here is a coloring book block for Clay's choice. See how different it looks? Enlarge and copy the block to play around with color to create your personal rendition of Clay's choice.




Finished Block:
12" x 12"

Enlarge Block:
240%



 A - Cut 3-1/2"

 B - Cut 3-7/8"

2010 Events Calendar

August 24---**Deb Rowden**, Making Memories

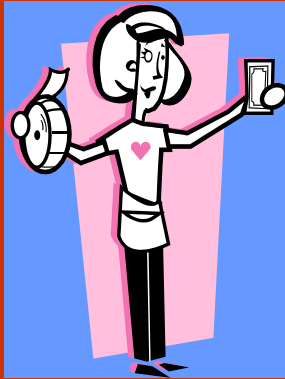
September 28----Quilting Bee and Quilted Postcard Workshop

September 17-19---SQG Retreat, The Barn

October 9 & 10-- SQG Quilt Show-" Everything Old is New Again"

October 26---**Kathy Delaney**, It I'm the Appliqué Queen, Where is My Crown?

November 16---**Caroline Searles**, Closets, Shelves, Trunks, and Under the Bed



Advertisements

FREE! Post your AD HERE! If you are a guild member in good standing and would like to run your **FREE** ad, send your information to the newsletter editor. See back page for details.

Pieces in Plaid Quilting by Lynne Zeh. A professional full service quilter for 6 years. Located in Lenexa, KS.

Machine Quilting. Let's make your quilt special! Machine quilting; traditional or contemporary, simple or custom. Peggy Skaith 913-341-0525 or Especially-Quilts@att.net

Machine Quilting by Julia Day. Is your piecing ready to transform? Call for your consultation today.

Communications-

Let us know of any concerns, deaths, triumphs, or if someone needs help with something. This way we know what is going on with our fellow members and can send cards, etc. Contact one of these members:

- Rosie Brinker---913-268-8819 or rosie474@aol.com
- Shirley Lewis---913-722-5486 or sll849@aol.com
- Barbara DeMack---913-485-3966 or barb-stoys4u@hotmail.com



Blog-

For those of you who are interested in quilts, especially old quilts, Donna DiNatale has started a new blog that will talk about some of her quilts. She will include information about collecting and caring for quilts, old and new. She'd love to have you follow along and provide comments. Here is the link: <http://heartlandquilts.blogspot.com/>



Starlight E-site—the Yahoo Group

---Lea Robrahn
Starlight E-Site is an online club where Starlight members get together to share photos, links, documents or files, and have a message board to post items of interest.

It sounds more complicated than it is. You can elect to read all information on the E-Site, which leaves your inbox less cluttered.

To join:

1. Send an email message to Lea Robrahn (remove spaces) leannieq@hotmail.com
2. You'll than be sent an invitation from Starlight E-Site
3. Join.

"FIND US ON FACEBOOK" <http://www.facebook.com/group.php?gid=106359079270>

Northland Needlers Quilt Show

Sept. 17-18, 2010
"Harvest of Holidays" theme
Gashland Presbyterian Church
8029 N Oak Trafficway

Quilts on display, quilts and quilted items for sale, vendors, AQS Certified Quilt Appraiser Ann Hazelwood, and more!

Read all about it at NNQS.webs.com



Membership Information:

2010 Membership, New or Renewal, \$25.00. Your annual dues bring the newsletter chocked full of information and

news of upcoming events to your e-mail or home; provide a lending library of quilting books available to members; and other benefits too numerous to mention!

Meeting Date and Time:

Monthly guild meetings are held 6:30-9:00 PM every 4th Tuesday, January-October at **Countryside Christian Church, 6101 Nall, Mission, KS**. The November meeting date is determined each year based on the Thanksgiving holiday. There is no December meeting.



Changes: If you have moved, changed your name, e-mail address or telephone numbers (home, work, or cell), please bring them with you to the next guild meeting or mail them to Starlight Quilters Guild, PO Box 9362, Shawnee Mission, KS 66201

Newsletter Deadline:

Articles are due the 5th of the month. E-mail your article to Margaret Welch at mwelch5@kc.rr.com (913-432-4515) .



Meeting Cancellation:

SQG meetings will be canceled if the Shawnee Mission School District cancels classes. Monitor announcements on TV and radio when bad weather threatens.

NEXT SQG MEETING!

Tuesday, August 24, 2010 6:30 PM—Meet friends, gobble some goodies, bring some boutique items or tickets, sign up to volunteer!

7:00 PM—Making Memories by Deb Rowden



Remember to bring:

- Nametag
- Show and Tell
- Library Books
- Goodies (if it is your Birthday)
- Fat Quarter (see list)

Starlight Quilters Guild
P.O. Box 9362
Shawnee Mission, KS 66201-2062
www.starlightquilters.com